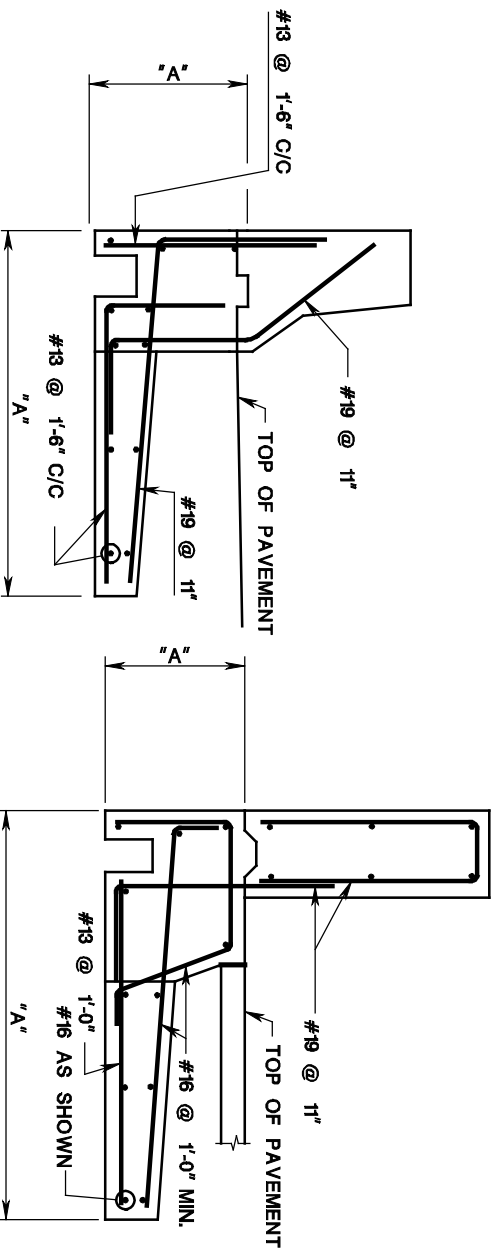


STANDARD NEW JERSEY BARRIER

STANDARD 2'-8" PARAPET

PREFABRICATED MODULAR WALL



STANDARD NEW JERSEY BARRIER

STANDARD 2'-8" PARAPET

WHEN DESIGNING MSE WALL SYSTEMS, REFER TO SECTION 11 OF THE AASHTO LRFD BRIDGE DESIGN SPECIFICATIONS FOR TREATMENT OF TRAFFIC LOADS AND OF THE BARRIER AND PARAPET LOADS.

MECHANICALLY STABILIZED EARTH WALL

NOTES:

1. ALL DETAILED REINFORCEMENT SHALL BE CORROSION PROTECTED.
2. "A" DIMENSIONS SET FOR SPECIFIC SITE BY WALL MANUFACTURER.
3. REFER TO SECTION 3 OF THIS MANUAL FOR ANCHOR SLAB DESIGN GUIDANCE.